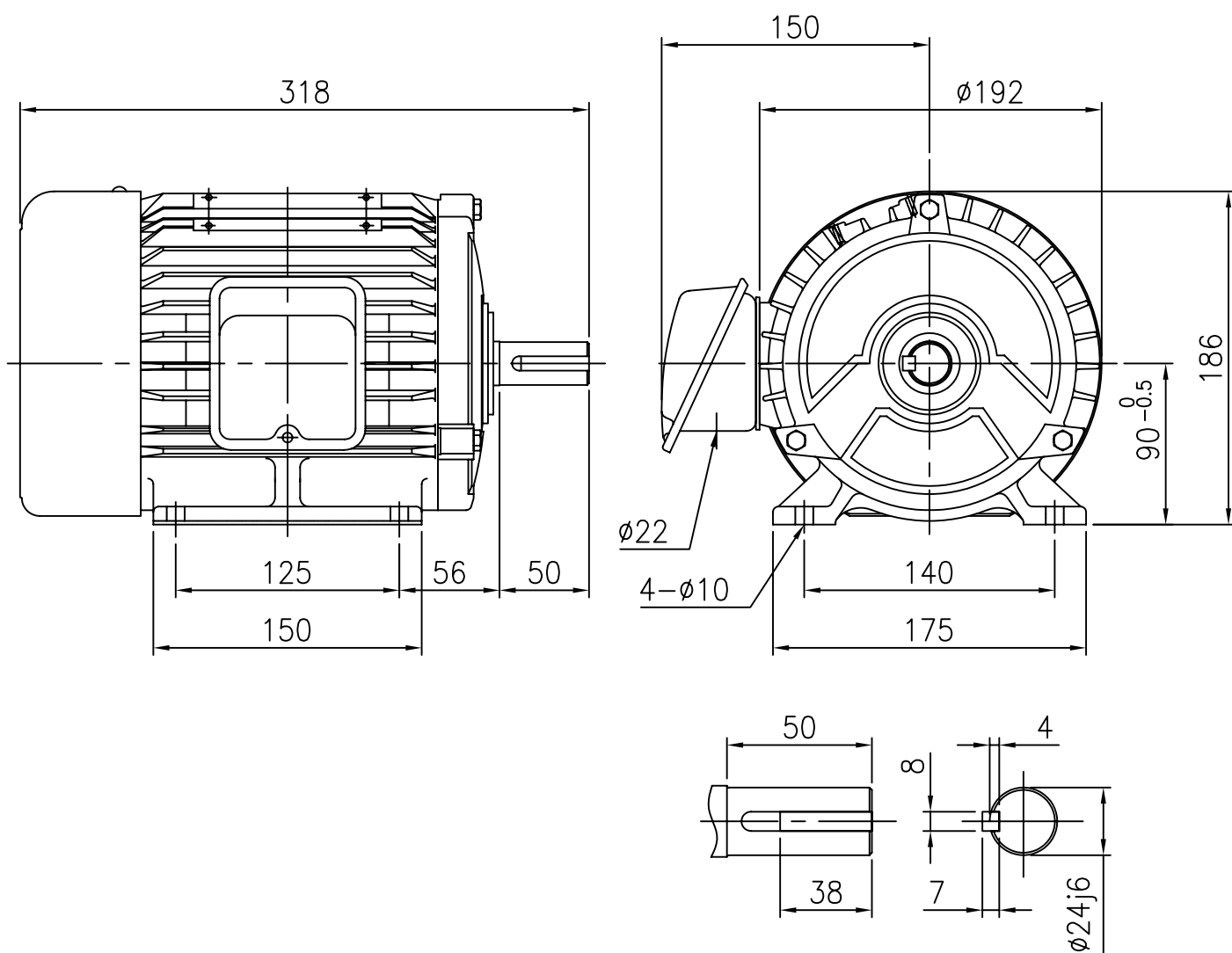


OUTLINE DIMENSION



SHAFT EXTENSION

<NOTE>

1. TYPE : TEFC(Totally Enclosed Fan Cooled)
FOOT MOUNTED TYPE

2. THE TOLERANCE FOR THE KEY DIMENSIONS
IS IN ACCORDANCE WITH KS B 1311-84

3. THE TERMINAL BOX MAY BE ROTATED
STEPS OF 90°

4. CAST IRON FRAME AND END BRACKETS.

5. STAINLESS STEEL NAME PLATE WITH
CONNECTION DIAGRAM.

6. STEEL FAN COVER AND TERMINAL BOX.

FRAME NO.	OUTPUT (kW)	POLE (P)	Hz	VOLTS (V)	INS. CLASS	PROTECTION	RATING	BEARING NO.		APPROX. WEIGHT (Kg)
								DRIVE	OPP.D.	
90L	1.5	2	30~60	220/380	F	IP44	CONT.	6205ZZ	6204ZZ	21

UNIT	mm	SCALE	$\frac{N}{S}$	PROJECT'N	3rd Angle	TITLE	OUTLINE
DESIGNED		CHECKED		APPROVED			
2009.03.13 Y.D. WON		2009.03.13 Y.D. WON		2009.03.13 H.J. KIM		SUBJECT	90L, B3
HIGEN Motor co., Ltd.						DWG. NO.	DW-1.5kW 2P 90L